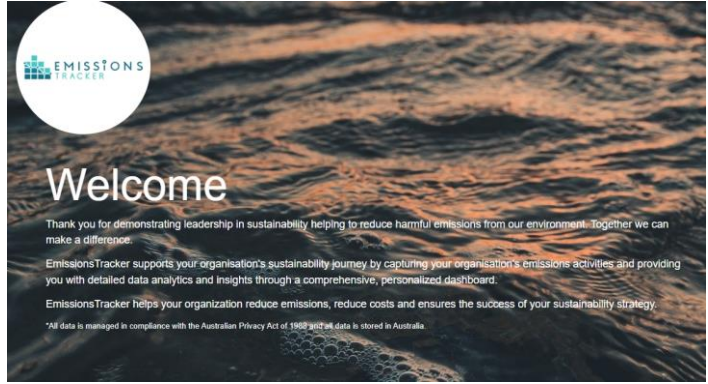
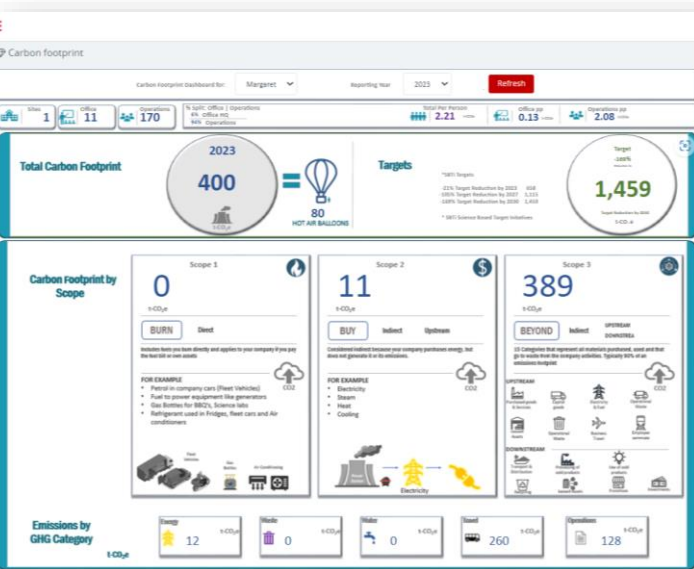


## Transform your organisation's environmental impact with EmissionsTracker

EmissionsTracker is the ultimate carbon footprint solution. Simplify your sustainability journey with our cutting-edge, easy to use, affordable and accessible online carbon accounting platform. Tailored for transport, logistics, warehousing, SMEs, educational bodies, and government sectors, EmissionsTracker is your partner in achieving sustainability excellence.



## What EmissionsTracker covers



**Effortless Integration:** Navigate through an intuitive interface, designed to make data collection seamless. Our forms guide you, offering tips and communication scripts for effective team engagement.

**Dynamic Reporting:** Instantly compare year-on-year data, capture initiatives, and visualize your success through a powerful dashboard. Achieve comprehensive Scope 1, 2, and 3 emissions analytics and insights, meet regulatory demands, and set benchmarks within your industry.

**Data Security:** Trust in our Azure-backed infrastructure ensuring your data's integrity, with adherence to Australian privacy laws. Your data stays onshore, safeguarded yet accessible for industry benchmarking.

**Empower through Education:** Access a wealth of resources to decode your environmental footprint and strategize its reduction.

## How it works

### Forms > Dashboard > Reports

**Seamless process:** A streamlined journey from data collection to insightful reporting. Capture, input, and analyze your environmental data across all scopes, benchmark against peers, and craft a data-driven environmental strategy.

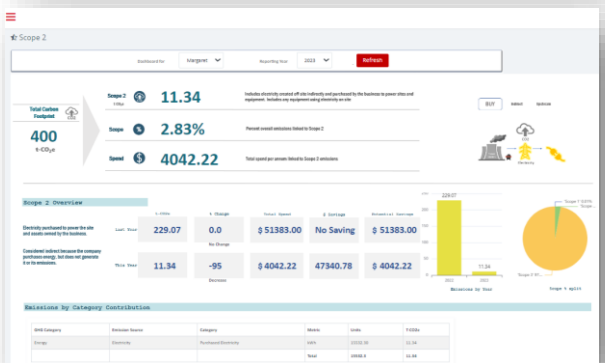
- **Forms:** Be guided through the process with built in tips including identifying what data to collect, whom to engage and pre scripted communications.
- **Accessible:** Input data from the office or in the field via pc or tablet. Our forms are fast, responsive and designed for minimal data entry, includes the ability to attach photos and additional notes.
- **Beyond data collection:** Additional forms can be easily tailored to specialized business activities.
- **Integrated Dashboard:** Data from forms are calculated to provide carbon emissions against all data points. Additionally, insights and correlations between activities and spend are provided to identify areas to reduce waste and / or cost.

Enter actual or estimated data

Category	Category type	Bill type	Total Distance travelled Actual or estimated (kms)
Heavy duty vehicles (Buses)	Gasoline / petrol Diesel oil Diesel oil - Euro iv or higher	Expense rep.	3200332
Light duty vehicles	Diesel oil - Euro iii Diesel oil - Euro i Liquefied petroleum gas (LPG) Liquefied natural gas	Expense rep.	0
Heavy duty vehicles (Buses)	Diesel oil - Euro iv or h	Expense rep.	0

Add additional data

+ ROW



- ✓ Online, secure, simple
- ✓ Intuitive forms-based data collection
- ✓ Reporting & monitoring tool
- ✓ International standards